

# CHEROKEE CHAPTER AT PATE SWAP MEET - SPRING 2017

## Pre- Registration Form for April 27<sup>th</sup> – 30<sup>th</sup> Event Texas Motor Speedway I-35W at HWY114 North of Fort Worth

**The Cherokee Chapter** has reserved 325+ spaces for the spring, **2017 PATE SWAP MEET**. These spaces are the largest contiguous open areas available, **New V.I.P. Parking lot behind Bike Display for RV's and Chapter's Visitors**.

- ✓ Spaces will be set aside for the *Cherokee Concourse D' Pate*, a large public display of historic motorcycles of all makes that ranges from 1900 - 1982 and ranging from factory original to period customized.
- ✓ Several Industry leaders will be displaying their Products and Custom Builders will be on hand

**Cost to Display** your vintage motorcycle(s) is a voluntary minimum one time donation of **\$20** for first + **\$10 each** for the extra motorcycles for 1 to 4 days in the main *Cherokee Concourse D' Pate* display area to help defray the chapters cost of the display area. This is a terrific opportunity to get our Chapter & our machines in front of the tens of thousands who attend.

**Vendor spaces** for selling motorcycle related items are also available (see box below for details.) Because Pate sells out the entire 9 acres of spots every year, anyone wanting to vend in the motorcycle section needs to contact us ASAP so we can have adequate spaces for the demand. This will be the 3<sup>rd</sup> annual Cherokee Chapter event that will grow each year as more spots become available to us, **Do not hesitate...reserve your spaces NOW!**

### ALL REGISTRATIONS WILL BE HANDLED BY THE CHEROKEE CHAPTER FOR PATE SPACES RESERVED BY OUR CHAPTER

1. Fill out the attached form completely for the directory, **the block number, street or avenue and space number will be assigned Cherokee Pate Chairman** as they are reserved in Chapters name. Window sticker &/or Entry Passes will be mailed before the event. The Chapter reserves the rights to assign spaces as needed in section 3 to accommodate Club, Members and Sponsors
2. Enclose completed form, release form, and check or money order (no cash) made payable to The Cherokee Chapter.

Mail to: Cherokee Chapter, Jo Ann Kugle, Treasurer; 8601 South View Rd, Austin, Texas, 78737

**ON JUNE 15, 2016, AND THEREAFTER, ALL SPACES WILL BE AVAILABLE ON A FIRST-COME FIRST-SERVED BASIS, NO EXCEPTIONS!**

#### TOTAL SPACE RENTAL RATES FOR THIS 4 DAY EVENT

9' x 18' = \$45.00 each single vending space (on asphalt)

9' x 36' = \$90.00 each (these are pull through spaces)

Corner spaces \$15.00 extra (if available)

*\*After May 31, 2016 all spaces will be \$10.00 extra*

Group Motorcycle Display – *Concours d'Pate*

\$20 first motorcycle, \$10 each additional

Private Portable Toilets - \$87.50 per toilet

*\*After Dec.31, 2016 toilets are \$95.00*

Sponsorships and Donations are welcome to defray club expenses. Each space includes a \$5 administration fee

**For additional information, contact Shelby Withrow, Cherokee Chapter / Pate Chairman**  
Call (940) 748-2555 or Email [ShelbyInParadise@wccs.net](mailto:ShelbyInParadise@wccs.net) or Website [www.cherokeeamca.org](http://www.cherokeeamca.org)

**NOTE:** The selling of wearing apparel, food, drink, sunglasses, cassette tapes, and any NASCAR Racing related Souvenir items are prohibited. For more detailed answers, contact **TMS Merchandising Department at (817)-215-8560**.

### CHEROKEE AT PATE SWAP MEET PRE-REGISTRATION – SPRING 2017

Name: \_\_\_\_\_ Phone \_\_\_\_\_ Cell \_\_\_\_\_

Business Name (if applicable) \_\_\_\_\_

Mailing Address: \_\_\_\_\_ Email Address \_\_\_\_\_

City: \_\_\_\_\_ State: \_\_\_\_\_ Zip: \_\_\_\_\_

For the Swap Meet Directory, what do you primarily sell/display: \_\_\_\_\_

#### **FOR REGISTRATION PERSONNEL USE ONLY BELOW THIS LINE**

Block # \_\_\_\_\_ Street / Avenue \_\_\_\_\_ Spaces Numbers \_\_\_\_\_

CUSTOMER NO. \_\_\_\_\_ CHECK NO. \_\_\_\_\_ AMOUNT: \_\_\_\_\_



## 2017 Bike Show Rules

### Welcome to the Third Annual Cherokee Concours d'Pate Show!

The Cherokee Chapter of the AMCA, along with participating AMCA Chapters and numerous Classic Motorcycle Clubs and VIP Sponsors are holding **The Cherokee Concours d' Pate Event on April 27 – April 30** at The **45<sup>th</sup> Annual Pate Swap Meet**, Texas Motor Speedway, Fort Worth TX.

**This Concours Show Event** is designed to be a Large Public Display of all American, European & Japanese Classic Motorcycles of all Makes and Models to share the History of Our Great Sport to the 120,000+ general public attendees annually. [www.PateSwapMeet.com](http://www.PateSwapMeet.com) [www.CherokeeAMCA.org](http://www.CherokeeAMCA.org) The Pate Swap Meet has over 10,000+ vendor spaces of all things transportation related. The Cherokee Chapter Motorcycle Swap Meet has 400 vendor spaces in 2016.

**Classes will be by decade** as shown below and all motorcycles regardless of Manufacturer, Model or Design Purpose will be shown in decade groups, much as they were in any parking lot in Anytown, America during any period of time in history. Therefore this is a ***Shine, Show Smile and Share Show***. To make this an enjoyable gathering of Classic Motorcycle Enthusiasts that wish to share their Machines with other Enthusiasts & the public we have made a special effort to make it very easy to attend, unload, register, show, share, smile & enjoy the event and reload away from all other highly congested parking areas that the general public uses.

- ✓ **A dedicated Cherokee Unloading / Loading area** and **Truck / Trailer Parking Area** is provided for all whom bring motorcycles to show. Just follow the signs on the Outer Loop Road around the Speedway.
  - The distance to the **Concours Show Area** is a very short push from the Bike Unloading Area.
- ✓ **RV / Camper Trailer Area** within our Bike Unloading / Loading Truck and Trailer Parking Area.
  - No hookups for electricity, water or sewer though.
  - You may run your generator in our Motorcycle Dedicated RV Area.
  - **Parking Fee for RV / Camper Parking is \$20 for all 4 days**
  - **Parking Fee for cars, pickups and trailers is \$5 per day**
- ✓ **No starting or riding motorcycles during the show** due to the size of this Swap Meet and the amount of people walking. If you need help pushing your motorcycle(s) please ask any Cherokee Chapter Member to assist you. Cherokee Chapter Members working the show all have the same matching T-Shirts and Caps

- ✓ **You may register your machine(s) online or when you arrive at the event.** [www.CherokeeAMCA.org](http://www.CherokeeAMCA.org)
  - **\$20 first motorcycle**
  - **\$10 each additional motorcycle.**
  - *These fees simply help cover our basic cost of all grounds space leased for the show area, space leased for the RV large parking, for trophies and are not a profit center for our non-profit Club.*
- ✓ **We will securely watch your machines** while you register and park your truck or trailer close nearby.
- ✓ **We will provide each owner an armband a numbered headlight sticker** for each motorcycle, and a **Swap Meet and Bike Show Map** showing where the two Concours Bike Show Event Areas are and assistance at the Bike Show Area to properly display your machine(s).
- ✓ **Additional Armed Security** is being provided for every night after the show closes at 5 pm and until it reopens next day at 10 am..
  - Concours Event Chairman Steve Klein and one other Concours Show Manager are staying in our personal RV / Race Trailers directly within the Bike Show Area for additional security.
  - If you wish to put your motorcycle(s) back in your trailer in the RV / Trailer Parking Area and secure them each day after the show you may do so with the proper armband and headlight number check at the gate to our Truck/Trailer Parking Area.
  - For those of you that put their motorcycles in their trailers at night you may take them back to the Show Area each morning only from **8-10 am** the next morning.
  - Or just put a bike cover on them and leave them in the Show area each evening under professional security watch.

### Concours d Pate Bike Show Times

Thursday April 27    10 am – 5 pm  
 Friday April 28      10 am – 5 pm  
 Saturday April 29    10 am – 5 pm

**Concour's Awards Program at 5:00 pm Saturday April 29<sup>th</sup> at The Cherokee Semi Trailer Office at the beginning of the Bike Show**

- ✓ **You do not need to show your motorcycle all 4 days**, however **People's Choice Judging** will be held all day Thursday/ Friday and Saturday. If you arrive a day late or leave a day early you will likely not receive an award as less people will vote for you.
- ✓ **No motorcycles will be removed from the Concours Show Area prior to 5 pm daily** and not without proper identification, armband and bike number all matching to avoid any potential theft situation.
- ✓ **The Concours d' Pate Show** will expand in future years and will include **Guest VIP Motorcycle Industry Judges** along with a much **more comprehensive Concours rules format with more Classes & Awards.**
- ✓ Again Please Understand our intention is to simply assemble the largest display of Vintage and Classic Motorcycles of all Manufacturers and Models in one location in the Southern half of the United States of America and the Country of Texas. We simply wish to share these magnificent machines with the general public and spread the awareness of the Cherokee Chapter and the AMCA.

## 2017 Classes and Awards

- **1900 – 1919 Best of Class**
- **1920 – 1929 Best of Class**
- **1930 – 1939 Best of Class**
- **1940 – 1949 Best of Class**
- **1950 – 1959 Best of Class**
- **1960 – 1969 Best of Class**
- **1970 – 1979 Best of Class**
- **1980+ Best of Class**
- **Competition Class Best of Class (Dirt & Road Race, Drag Race, Motocross, Trials, Cannonball Endurance)**
- **Lightweight Class Best of Class (under 249 cc, Street, On-Off Road, Scooters, Minibikes etc...)**
- **Modified Class Best of Class (Period Modified, Custom bobbers, Choppers, Café etc...)**
- **Best of Show (From all Classes combined)**

**That is a total of 16 Exclusive Awards**

## Pate Swap Meet and Cherokee Concours d Pate Bike Show & Grounds Rules at a Glance

- ✓ **Vendor's Gates open** at 7:00 am daily. Public Gates open at 10:00 am daily
- ✓ The Swap Meet and Concours d Pate Bike Show are open 10-5 Daily. 10 – 3 Sunday
- ✓ **If you register in advance** you will be mailed a Windshield Parking Sticker.
- ✓ **Color Coded Windshield Stickers** correlate to your parking area. No in and out privileges.
  - Cars and Trucks - \$5 per day
  - RV's \$20 for all 4 days.
- ✓ **If your register at the show**, you will need to **use the outer ring road around the Texas Motor Speedway**. A TMS Staff person will collect the \$5 per day parking fee and give you a Windshield Sticker.
- ✓ If you are in an RV or Camper they will collect the \$20 parking fee and give you a Windshield Sticker.
- ✓ A 5 mph maximum ground speed within the Swap Meet / Bike Show Grounds is enforced.
- ✓ No motorized vehicles within the Swap Meet or Bike Show Grounds. No motorized or non-motorized bicycles allowed. Too many pedestrians.
- ✓ Three and four wheeled scooters are available for rent on the grounds for Handicapped individuals. Everyone else uses good walking shoes.
- ✓ 10 pm – 7 am no vehicular movement whatsoever within the Swap Meet / Bike Show Event Area.
- ✓ RV Generators must not exceed the decibels shown during these times.
  - 7 am – 10 pm 70 decibels
  - 10 pm – 7 am 45 decibels
- ✓ No stakes driven into asphalt or compacted material parking lots. Use weights to hold awnings down.
- ✓ Landing gear on RV's / Trailers will sit on 12" x 12"  $\frac{3}{4}$ " thick plywood.
- ✓ No Open Fires in Camping / RV Areas
- ✓ No firearms displayed.
- ✓ Pets will remain on a leash no longer than 6 feet at all times while on Texas Motor Speedway Property.
- ✓ No glass containers on any Texas Motor Speedway Property
- ✓ No selling of beverages or food on Texas Motor Speedway Property.
- ✓ No selling of any merchandise whatsoever with Texas Motor Speedway or NASCAR related symbols.
- ✓ Restrooms and Showers are on site.

**Note:** Weather in late April in Fort Worth, Texas can vary widely from hot to cold. Pack for any eventuality. Bring extra clothes to layer in cold weather, sunscreen and a hat for hot weather, and an umbrella. Wear your most comfortable walking shoes as there are 15 streets of vendors 1.25 miles long each and no motorized vehicles or pedal bicycles are allowed at any time unless you legitimately have a Handicap Placard. This is not a fashion show. The Swap Meet and Concours Show are held in the Texas Motor Speedway open air, asphalt parking lot with no trees or shade!

**This is a Continuation of an Epic Chapter in the History of The Cherokee Chapter of the AMCA.** Be a part of History and participate in the biggest Classic and Vintage Display of Motorcycles in Texas and the Southern USA! This is our largest annual event and we wish that all our members would take time to attend, volunteer to help our **Cherokee Pate Motorcycle Swap Meet** and **Cherokee Concours d Pate Show** and certainly to bring your motorcycle(s) to the *Shine, Show Smile and Share Event* for the general public.

***Proud to be...Cherokee!***

***Greg***

Greg McFarland, President  
Cherokee Chapter of the AMCA

# CONCOURSE d'PATE

## Bike Show Registration

The Cherokee Chapter Concours d'Pate Bike Show is the largest Public display of Vintage and Classic Motorcycles in Texas. It is solely intended to be a **Shine, Show, Share and Smile Event** designed specifically to allow all Vintage and Classic Motorcycle Owners the distinct pleasure to share these wonderful machines and their individual history with the 120,000+ people whom attend Pate Swap Meet annually.

Open to all Makes, Models and Types of motorcycles **35 years or older**. (Call or email for exceptions)

- \$20.00 fee for the first motorcycle
- \$10 Fee for each additional motorcycle
- Best of Class, Best of Show and VIP & Event Sponsor Trophies
- Dedicated Unloading and Loading Area adjacent to the Bike Show. (Look for signs at the event.)
- Truck Trailer Parking adjacent to the Bike Show Unloading / Loading Area.
- Cherokee Chapter RV Community Area adjacent to all these areas. (No RV Hookups. Rustic Camping)
- Professional armed security for the bike show area 5pm to 10 am.

PLEASE **PRINT NEATLY** BELOW TO HELP US ENSURE ALL INFO IS CORRECT!

Motorcycle Owners Name: (PRINT) \_\_\_\_\_

Email: \_\_\_\_\_

Phone / Cell \_\_\_\_\_

Motorcycle #1 – Year: \_\_\_\_\_ Make: \_\_\_\_\_ Model: \_\_\_\_\_ \$20.00

Motorcycle #2 - Year: \_\_\_\_\_ Make: \_\_\_\_\_ Model: \_\_\_\_\_ \$10.00

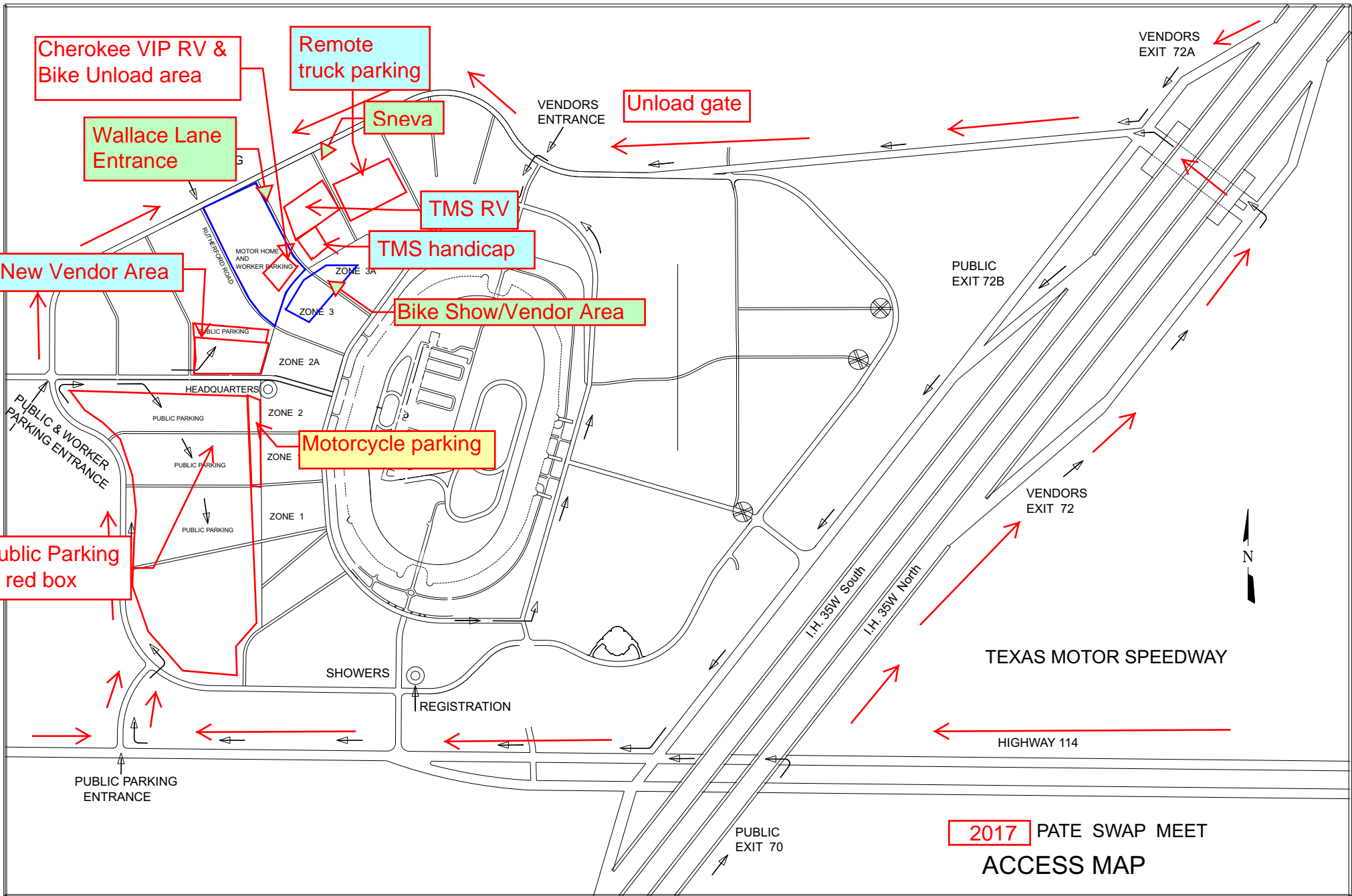
Motorcycle #3 - Year: \_\_\_\_\_ Make: \_\_\_\_\_ Model: \_\_\_\_\_ \$10.00

Motorcycle #4 - Year: \_\_\_\_\_ Make: \_\_\_\_\_ Model: \_\_\_\_\_ \$10.00

✓ As a Participant of this event I have/will signed a Release of Liability Form at the Event.

\_\_\_\_\_  
Signature Date Total \$ \_\_\_\_\_

Checks Payable to Cherokee Chapter. Mail to Jo Ann Kugle, Treasurer; 8601 South View Road, Austin TX 78737. Deadline for postmark Wednesday April 19<sup>nd</sup>. If not mailed by then, just pay in cash at the event. For further information [www.CherokeeAMCA.org](http://www.CherokeeAMCA.org) or Lecil [lecilv@yahoo.com](mailto:lecilv@yahoo.com) or 940.391.9570



Cherokee VIP RV & Bike Unload area

Remote truck parking

Wallace Lane Entrance

Sneva

Unload gate

VENDORS EXIT 72A

VENDORS ENTRANCE

TMS RV

TMS handicap

New Vendor Area

Bike Show/Vendor Area

PUBLIC EXIT 72B

MOTOR HOME AND WORKER PARKING

ZONE 3A

ZONE 3

ZONE 2A

ZONE 2

ZONE

ZONE 1

Motorcycle parking

Public Parking in red box

PUBLIC & WORKER PARKING ENTRANCE

HEADQUARTERS

PUBLIC PARKING

PUBLIC PARKING

PUBLIC PARKING

SHOWERS

REGISTRATION

PUBLIC PARKING ENTRANCE

I.H. 35W South

I.H. 35W North

TEXAS MOTOR SPEEDWAY

HIGHWAY 114

VENDORS EXIT 72

PUBLIC EXIT 70

2017 PATE SWAP MEET ACCESS MAP

